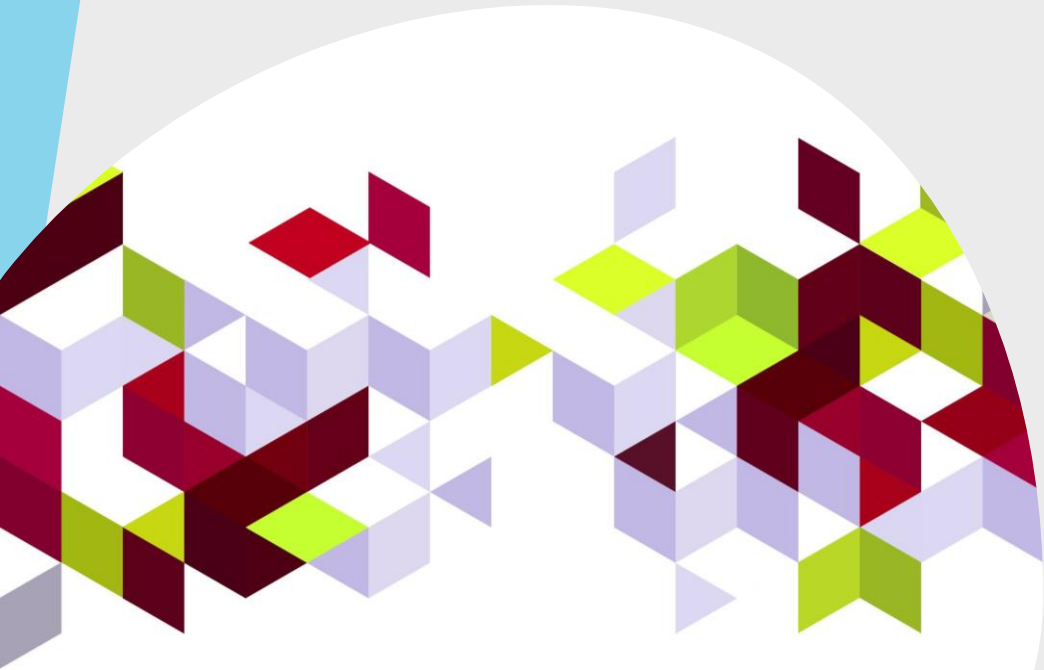


KVCC

KENNEBEC VALLEY  
COMMUNITY COLLEGE

# Childcare Provider: COVID-19 Foundations Digital Badge

Module 1 - Definitions and Preparedness



# Welcome

- ▶ Kennebec Valley Community College recognizes the importance of providing quality care for children, parents and employees within childcare facilities and by providers. This micro-badge will provide best practices along with information from the Maine Department of Health and Human Services and the Maine CDC.
- ▶ At the end of each module students will have review questions to assist in demonstrating your knowledge of the subjects.
- ▶ Following the completion of these modules and a passing rate of 80% on the final quiz, students will be awarded a Childcare Provider COVID-19 Foundations digital badge

# Definitions

## ▶ Virus

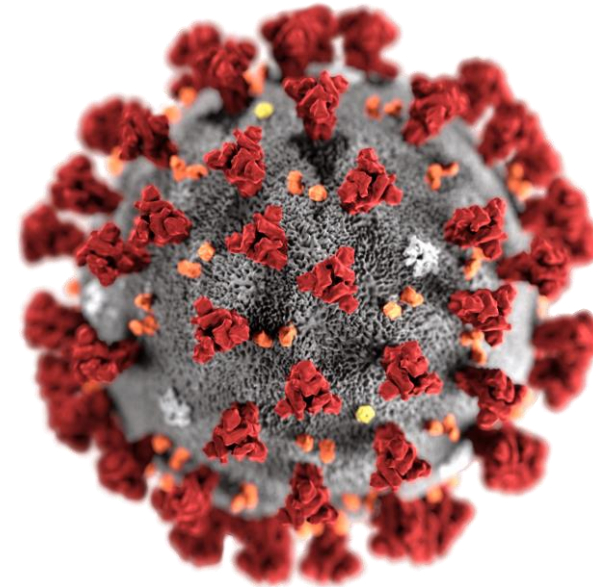
- ▶ Noun, *“an infective agent that typically consists of a nucleic and molecule in a protein host, is too small to be seen by light, microscopy, and is able to multiply only within the living cells of a host.”*

## ▶ Vaccine

- ▶ *“A vaccine stimulates your immune system to produce antibodies, exactly like it would if you were exposed to the disease. After getting vaccinated, you develop immunity to that disease, without having to get the disease first.”*

# What is COVID-19?

- ▶ COVID-19 is a novel (new) coronavirus which was first detected in December 2019 and has spread around the world.
- ▶ For some, the respiratory virus causes mild symptoms like the common cold or influenza (flu), for others it can cause severe pneumonia that requires medical care or hospitalization.
- ▶ The virus name “SARS-COV-2” and the disease it causes is named “coronavirus disease 2019” (abbreviated “COVID`19”).



# How does COVID-19 Spread?

- ▶ The virus appears to spread in similar ways to influenza (flu) and the common cold. This may include spreading through
  - The air by coughing and sneezing
  - Close personal contact, such as touching or shaking hands
  - Touching an object or surface with the virus on it, then touching your mouth, nose or eye.
  - The virus can spread from person to person and in some locations, there is apparent community spread, meaning some people are infected and are not sure how or where they became infected.

# Preparedness and Planning

- ▶ Childcare facilities should be prepared for COVID-19 by:
  - Working with local health officials
  - Working with and having communication with local schools
  - Working with and having communication with other childcare facilities
  - Have a plan in place and be sure staff and families are familiar with the plan
  - Train all staff in hygiene, physical distancing, use of personal protective equipment, and other safety practices.
  - Facility should monitor guidelines on a regular basis as information and guidelines may change

# Preparedness Continued

- ▶ While staff and parents may be reluctant to report or to stay home, facilities should have a non-punitive policy that will allow for early reporting.
- ▶ Have a policy for notifying staff and parents of any possible COVID-19 related illnesses while maintaining confidentiality of the person / family.
- ▶ Maintain a list of staff and children. If there are multiple classrooms the list should be kept by classroom.

# Preparedness Continued - List

- ▶ If possible, the list should be kept electronically.
- ▶ The list should contain the following information
  - The staff person's role
  - The child's name
  - Name of parent/guardian
  - Mailing address
  - Phone Numbers (work, home, cell)
  - Email address



# Preparedness Continued

- ▶ If an employee becomes ill while at the facility.
- If an emergency, call 911
- The employee should leave the facility immediately.
- If immediate departure is not possible, have a space where the employee may isolate from others
- Be sure the employee is wearing a face covering
- Clean the room and thoroughly disinfect

# Preparedness Continued

- ▶ If a child becomes ill while at the facility:
  - If an emergency, call 911
  - Have a designated space where the child can be isolated
  - Have a designated staff person to care for the child until parents arrive
  - Contact the parent / guardian and arrange for immediate pick up. Have a clear time within which the parents must pick the child up
  - Clean and thoroughly disinfect the room with which the child was in

# Reporting

- ▶ Timely notification is important in controlling the spreads of COVID-19
- ▶ Confidentiality should be maintained as is consistent with the Americans with Disabilities Act and other Federal and state privacy laws
- ▶ Facilities should report to the following:
  - ▶ CDC (1-800-821-5821)
  - ▶ Their Child Care Licensing Specialist
  - ▶ Families

# Planning Questions - Review 1

- ▶ In order to keep up-to-date on out-breaks in the local area - Facilities should
  - A. Not monitor area transmission
  - B. Have a plan to communicate with local schools and health officials
  - C. Have a plan that is communicated to staff and clients
  - D. B & C

# Planning / Preparedness Questions - Review 2

- ▶ Facilities should be prepared in case an employee or child becomes ill while at the facility. They should have the following in place:
  - A. A list of employees with contact information
  - B. A list of children with parent / guardian information
  - C. A secure location to isolate either the employee or the children until they are able to safely leave the facility
  - D. All of the above

# Reporting Questions

- ▶ If a confirmed positive case of COVID-19 is the facility responsible for notifying any agencies?
  - A. Yes
  - B. No
  
- ▶ Is the facility required to maintain confidentiality of the confirmed case?
  - A. Yes
  - B. No

# Preparedness and Planning Review

## Answers

- ▶ In order to keep up-to-date on out-breaks in the local area - Facilities should
  - ❖ The correct Answer is D - both B and C are correct
    - B. Have a plan to communicate with local schools and health officials
    - C. Have a plan that is communicated to staff and clients

Facilities should be prepared in case an employee or child becomes ill while at the facility. They should have the following in place:

- ❖ The correct Answer is D - All of the above
  - A. A list of employees with contact information
  - B. A list of children with parent / guardian information
  - C. A secure location to isolate either the employee or the children until they are able to safely leave the facility

# Reporting Answers

- ▶ In a confirmed positive case of COVID-19 is the facility responsible for notifying any agencies?
  - ❖ Yes
    - ▶ Notification to the CDC, Child Care Licensing Specialist, and families
- ▶ Is the facility required to maintain confidentiality of the confirmed case?
  - ❖ Yes
    - ▶ In accordance with the Americans with Disabilities act and Federal and State privacy policies



You did it!  
*Congratulations*



You made it to the end of Module 1

*Your next step is to learn about  
Symptoms and Screening*